

Field Guide

for string trio

commissioned by the
Fair Trade Chamber Music Society

Emily Doolittle, 2017

Field Guide

I. Horned Lark

II. Sage Grouse

III. Western Meadowlark

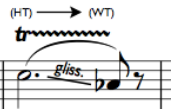
Duration: approx. 10'00"

Commissioned by the Fair Trade Chamber Music Society

Performance instructions:



Tenuto and staccato on a longer note: all instruments cut off together.



Glissando and trill at the same time, with whole tone or half tone trills as indicated.
Transition from whole tone to half tone trills or vice versa is gradual.

Field Guide

commissioned by the Fair Trade Chamber Music Society

I. Horned Lark

Emily Doolittle

♩ = 166

Violin: *mf* (triplets), *p* (gliss., tr.), *mf* (triplets)

Viola: *mf*, *p* (gliss., tr.), *mf*

Violoncello: *mf*, *p*, *mf*

(WT) *tr.* *gliss.*

6

Vln.: *p* → *mp*, *mf*

Vla.: *p* → *mp*, *mf*

Vc.: *p* → *mp*, *mf*

gliss.

11

Vln.: *f*, *mp*, *mf*

Vla.: *f*, *mp*, *mf*

Vc.: *f*, *mp*, *mf*

2

17

Vln. *f* *gliss.*

Vla. *f*

Vc. *f*

* All instruments come off staccato together.

22

Vln. *più f* *mp*

Vla. *più f* *mp*

Vc. *più f* *mp*

27

(2+3)

Vln. *più f* *mp*

Vla. *più f* *mp*

Vc. *più f* *mp*

31

Vln. *mf* *mp* *mf* *mp*

Vla. *mf* *mp* *mf* *mp*

Vc. *mf* *mp* *mf* *mp*

35

Vln. *ff* *p*

Vla. *ff* *p*

Vc. *ff* *p*

3

43

Vln. *mp*

Vla. *mp*

Vc. *mp* *p*

3/4

49

Vln. *p* *mp* *f*

Vla. *p* *mp* *f*

Vc. *mp* *f* *mp*

3

54

Vln. *mp*

Vla. *mp*

Vc. *mf* *mp*

3

58

Vln. *f* 4

Vla. *f* 4

Vc. *f* 4

65

(HT) → (WT) *tr* *gliss.* 2

(HT) → (WT) *tr* *gliss.* 2

(HT) → (WT) *tr* *gliss.* 2

(HT) → (WT) *tr* *gliss.* 2

Vln. *f* 2

Vla. *f* 2

Vc. *f* 2

72

mp 3

mp 3

mp 3

Vln. *mp* 3

Vla. *mp* 3

Vc. *mp* 3

77

mf *p* *gliss.* 3

mf *p* *gliss.* 3

mf *p* *gliss.* 3

Vln. *mf* *p* 3

Vla. *mf* *p* 3

Vc. *mf* *p* 3

81

Vln. *mp*

Vla. *mp*

Vc. *mp*

Measures 81-85: Violin, Viola, and Violoncello parts. Measure 81 starts with a 3/4 time signature. Measures 82-85 feature complex rhythmic patterns with triplets and dynamic markings of *mp*. The key signature has one sharp (F#).

86

Vln. *mf*

Vla. *mf*

Vc. *mf*

Measures 86-89: Violin, Viola, and Violoncello parts. Measure 86 starts with a 2/4 time signature. Measures 87-89 feature complex rhythmic patterns with triplets and dynamic markings of *mf*. The key signature has one sharp (F#).

90

Vln. *mf* *f*

Vla. *mf* *f*

Vc. *mf* *f*

Measures 90-93: Violin, Viola, and Violoncello parts. Measure 90 starts with a 4/4 time signature. Measures 91-93 feature complex rhythmic patterns with triplets and dynamic markings of *mf* and *f*. The key signature has one sharp (F#).

94

Vln. *mp* *p* *mp > p*

Vla. *mp* *p* *mp > p*

Vc. *mp* *p* *mp > p*

Measures 94-97: Violin, Viola, and Violoncello parts. Measure 94 starts with a 4/4 time signature. Measures 95-97 feature complex rhythmic patterns with triplets and dynamic markings of *mp* and *p*. The key signature has one sharp (F#).

100

Vln. *pp*

Vla. *pp*

Vc. *pp*

Detailed description: This system covers measures 100 to 102. The Violin part (Vln.) features a melodic line with glissando markings (gliss.) and a piano-piano (*pp*) dynamic. The Viola (Vla.) and Cello (Vc.) parts provide harmonic support with similar rhythmic patterns and a *pp* dynamic.

105

Vln. *p*

Vla. *p*

Vc. *p*

Detailed description: This system covers measures 105 to 107. The Violin part (Vln.) has a melodic line with glissando markings (gliss.) and a piano (*p*) dynamic. The Viola (Vla.) and Cello (Vc.) parts continue the harmonic texture with a *p* dynamic.

109

Vln. *mp*

Vla. *mp*

Vc. *mp*

Detailed description: This system covers measures 109 to 112. The Violin part (Vln.) features a melodic line with glissando markings (gliss.) and a mezzo-piano (*mp*) dynamic. The Viola (Vla.) and Cello (Vc.) parts provide harmonic support with a *mp* dynamic. The time signature changes from 3/4 to 2/4 and then to 3/4.

113

Vln. *ff*

Vla. *ff*

Vc. *ff*

Detailed description: This system covers measures 113 to 116. The Violin part (Vln.) has a melodic line with glissando markings (gliss.) and a fortissimo (*ff*) dynamic. The Viola (Vla.) and Cello (Vc.) parts provide harmonic support with a *ff* dynamic. The time signature changes from 3/4 to 2/4 and then to 3/4.

141

Violin (Vln.) part: Treble clef, 3/4 time signature. Measure 141: whole rest. Measure 142: 3/4 time signature, quarter note G4, quarter note F4, quarter note E4. Measure 143: 4/4 time signature, quarter note D4, quarter note C4, quarter note B3, quarter note A3. Measure 144: 2/4 time signature, quarter note G3, quarter note F3. Measure 145: 2/4 time signature, quarter note E3, quarter note D3. Dynamics: *p* in measure 143, *mp* in measure 145. Trills of three notes are marked above measures 143 and 144.

Viola (Vla.) part: Bass clef, 3/4 time signature. Measure 141: quarter note G3, quarter note F3, quarter note E3. Measure 142: 3/4 time signature, quarter note D3, quarter note C3, quarter note B2. Measure 143: 4/4 time signature, quarter note A2, quarter note G2, quarter note F2, quarter note E2. Measure 144: 2/4 time signature, quarter note D2, quarter note C2. Measure 145: 2/4 time signature, quarter note B1, quarter note A1. Dynamics: *mf* in measure 141, *p* in measure 143.

Violoncello (Vc.) part: Bass clef, 3/4 time signature. Measure 141: whole rest. Measure 142: 3/4 time signature, whole rest. Measure 143: 4/4 time signature, whole rest. Measure 144: 2/4 time signature, whole rest. Measure 145: 2/4 time signature, quarter note G2, quarter note F2, quarter note E2. Dynamics: *mf* > *mp* in measure 145. A glissando is marked above the notes in measure 145. A trill of three notes is marked below the notes in measure 145.

146

Violin (Vln.) part: Treble clef, 2/4 time signature. Measure 146: quarter note G4, quarter note F4, quarter note E4. Measure 147: 3/4 time signature, quarter note D4, quarter note C4, quarter note B3. Measure 148: 4/4 time signature, quarter note A3, quarter note G3, quarter note F3, quarter note E3. Measure 149: 2/4 time signature, quarter note D3, quarter note C3. Dynamics: *p* in measure 148. A trill of three notes is marked above measure 147.

Viola (Vla.) part: Bass clef, 2/4 time signature. Measure 146: quarter note G3, quarter note F3, quarter note E3. Measure 147: 3/4 time signature, quarter note D3, quarter note C3, quarter note B2. Measure 148: 4/4 time signature, quarter note A2, quarter note G2, quarter note F2, quarter note E2. Measure 149: 2/4 time signature, quarter note D2, quarter note C2. Dynamics: *mf* > *mp* in measure 147, *p* in measure 148. A glissando is marked above the notes in measure 147. A trill of three notes is marked above measure 148.

Violoncello (Vc.) part: Bass clef, 2/4 time signature. Measure 146: quarter note G2, quarter note F2, quarter note E2. Measure 147: 3/4 time signature, quarter note D2, quarter note C2, quarter note B1. Measure 148: 4/4 time signature, quarter note A1, quarter note G1, quarter note F1, quarter note E1. Measure 149: 2/4 time signature, quarter note D1, quarter note C1. Dynamics: *p* in measure 148. A trill of three notes is marked below measure 148.

150

Violin (Vln.) part: Treble clef, 3/4 time signature. Measure 150: quarter note G4, quarter note F4, quarter note E4. Measure 151: 3/4 time signature, quarter note D4, quarter note C4, quarter note B3. Measure 152: 4/4 time signature, quarter note A3, quarter note G3, quarter note F3, quarter note E3. Measure 153: 2/4 time signature, quarter note D3, quarter note C3. Dynamics: *mp* > *p* in measure 151, *mp* > *p* in measure 152, *mp* in measure 153. A trill of three notes is marked above measure 152.

Viola (Vla.) part: Bass clef, 3/4 time signature. Measure 150: quarter note G3, quarter note F3, quarter note E3. Measure 151: 3/4 time signature, quarter note D3, quarter note C3, quarter note B2. Measure 152: 4/4 time signature, quarter note A2, quarter note G2, quarter note F2, quarter note E2. Measure 153: 2/4 time signature, quarter note D2, quarter note C2.

Violoncello (Vc.) part: Bass clef, 3/4 time signature. Measure 150: quarter note G2, quarter note F2, quarter note E2. Measure 151: 3/4 time signature, quarter note D2, quarter note C2, quarter note B1. Measure 152: 4/4 time signature, quarter note A1, quarter note G1, quarter note F1, quarter note E1. Measure 153: 2/4 time signature, quarter note D1, quarter note C1.

154

Violin (Vln.) part: Treble clef, 2/4 time signature. Measure 154: quarter note G4, quarter note F4, quarter note E4. Measure 155: 2/4 time signature, quarter note D4, quarter note C4. Measure 156: 3/4 time signature, quarter note B3, quarter note A3, quarter note G3. Measure 157: 2/4 time signature, quarter note F3, quarter note E3. Dynamics: *mf* in measure 156, *mp* in measure 157.

Viola (Vla.) part: Bass clef, 2/4 time signature. Measure 154: quarter note G3, quarter note F3, quarter note E3. Measure 155: 2/4 time signature, quarter note D3, quarter note C3. Measure 156: 3/4 time signature, quarter note B2, quarter note A2, quarter note G2. Measure 157: 2/4 time signature, quarter note F2, quarter note E2. Dynamics: *mp* in measure 156.

Violoncello (Vc.) part: Bass clef, 2/4 time signature. Measure 154: quarter note G2, quarter note F2, quarter note E2. Measure 155: 2/4 time signature, quarter note D2, quarter note C2. Measure 156: 3/4 time signature, quarter note B1, quarter note A1, quarter note G1. Measure 157: 2/4 time signature, quarter note F1, quarter note E1. Dynamics: *mp* in measure 156.

158

Vln.

Vla.

Vc.

161

Vln.

Vla.

Vc.

8^{va}

(8)

164

Vln.

Vla.

Vc.

ff *p*

ff *p*

ff *p*

II. Sage Grouse

$\text{♩} = 132$

Violin

Viola

Violoncello

*pizz.**

pp

8

Vln.

Vla.

Vc.

*pizz.**

pp

14

Vln.

Vla.

Vc.

pp

20

Vln.

Vla.

Vc.

*pizz.**

pp

* Pizzicatos have been written with different note values for ease of reading - but of course will all sound pizzicato-length.

26

Vln. *pp* cresc.

Vla. *pp* cresc.

Vc. *pp* cresc.

Detailed description: This system contains measures 26 through 29. The Vln. part starts with a whole rest in measure 26, followed by a half note G4 in measure 27, and continues with eighth and quarter notes. The Vla. part has a quarter rest in measure 26, followed by eighth and quarter notes. The Vc. part has a whole rest in measure 26, followed by a half note G2 in measure 27, and continues with quarter notes. All parts are marked *pp* cresc. The time signature is 4/4.

30

Vln.

Vla.

Vc.

Detailed description: This system contains measures 30 through 33. The Vln. part continues with eighth and quarter notes. The Vla. part continues with eighth and quarter notes. The Vc. part continues with quarter notes. The time signature is 4/4.

34

Vln. *p*

Vla.

Vc.

Detailed description: This system contains measures 34 through 37. The Vln. part starts with a quarter rest in measure 34, followed by eighth and quarter notes, marked *p*. The Vla. part continues with eighth and quarter notes. The Vc. part continues with quarter notes. The time signature changes to 5/4 at the end of measure 37.

38

Vln.

Vla.

Vc.

Detailed description: This system contains measures 38 through 41. The Vln. part continues with eighth and quarter notes. The Vla. part continues with eighth and quarter notes. The Vc. part continues with quarter notes. The time signature changes to 5/4 at the beginning of measure 38.

43

Vln. *(p cresc.)*

Vla. *(p cresc.)*

Vc. *(p cresc.)*

46

50

54

58

Vln. *(mp cresc.)*

Vla. *(mp cresc.)*

Vc. *(mp cresc.)*

Measures 58-60: Violin, Viola, and Violoncello parts. The key signature has one sharp (F#) and the time signature is 4/4. All three parts are marked *(mp cresc.)*. The Violin part features a melodic line with eighth and sixteenth notes. The Viola part has a similar rhythmic pattern. The Violoncello part provides a bass line with eighth notes and rests.

61

Vln. *mf*

Vla. *mf*

Vc. *mf*

Measures 61-63: Violin, Viola, and Violoncello parts. The key signature has one sharp (F#) and the time signature is 4/4. All three parts are marked *mf*. The Violin part continues with a melodic line. The Viola part has a similar rhythmic pattern. The Violoncello part provides a bass line with eighth notes and rests.

64

Vln.

Vla.

Vc.

Measures 64-66: Violin, Viola, and Violoncello parts. The key signature has one sharp (F#) and the time signature is 4/4. The Violin part features a melodic line with eighth and sixteenth notes. The Viola part has a similar rhythmic pattern. The Violoncello part provides a bass line with eighth notes and rests.

67

Vln. *ff*

Vla. *ff*

Vc. *ff*

Measures 67-69: Violin, Viola, and Violoncello parts. The key signature has one sharp (F#) and the time signature is 4/4. All three parts are marked *ff*. The Violin part continues with a melodic line. The Viola part has a similar rhythmic pattern. The Violoncello part provides a bass line with eighth notes and rests.

70

Vln. *mf* *p* **2**

Vla. *mf* *p* **2**

Vc. *mf* *p* **2**

unmeasured
poco rit.

75

Vln. *f* *gliss.* **2**

Vla. *f* *gliss.* **2**

Vc. *f* *gliss.* **2**

f * Glissando upwards, while continuing to play a pizzicato doublestop. Gradually lighten pressure on the strings, so the notes become percussive and unpitched.

III. Western Meadowlark

$\text{♩} = 140$
lively

Violin
p — *mp* > *p* — *mp* — *p*

Viola
pp — *p* > *pp*

Violoncello

6

6

6

11

Vln.
mp — *mf* > *mp* — *mf* — *mp*

Vla.
p — *mp* > *p*

Vc.

6

6

6

21

Vln.
mf — *f* > *mf* — *f* — *mf*

Vla.
mp — *mf* > *mp*

Vc.

6

6

6

31

Vln. *f* — *più f > f* *ff* — *f*

Vla. *mf* *ff > mf*

Vc. *4*

39

Vln. *ppp* *pp* *ppp*

Vla. *pp* *p* *pp*

Vc. *pp* *p* *pp*

45

Vln. *mf* — *f > mf* *f* — *f*

Vla. *mp* *mf > mp*

Vc. *5*

54

Vln. *mf* — *f > mf* *f* — *f*

Vla. *mp* *f > mp*

Vc. *5*

85

Vln. *mp* *mf* > *mp*

Vla. *p* > *pp* *p*

Vc. > *pp*

2

3/4

88

Detailed description: This system covers measures 85 to 88. The Violin part starts with a whole rest in measure 85, then plays a half note in 3/4 time, followed by a quarter note in 3/4 time. Dynamics are *mp* and *mf* > *mp*. The Viola part has a half note in 3/4 time, then a quarter note in 3/4 time, followed by a quarter note in 3/4 time. Dynamics are *p* and *pp*. The Violoncello part has a half note in 3/4 time, then a quarter note in 3/4 time, followed by a quarter note in 3/4 time. Dynamics are *pp*. A fermata is placed over the first measure of the Viola and Vc. parts. A '2' is written above the first measure of the Vln. part.

92

Vln. *f* *f* *p*

Vla. *mf* > *mp* *mp*

Vc. *mp*

3

5/8 2/4 3/4 7/8

Detailed description: This system covers measures 92 to 95. The Violin part has a triplet of eighth notes in 5/8 time, then a quarter note in 2/4 time, followed by a quarter note in 3/4 time. Dynamics are *f* and *p*. The Viola part has a quarter note in 5/8 time, then a quarter note in 2/4 time, followed by a quarter note in 3/4 time. Dynamics are *mf* > *mp* and *mp*. The Violoncello part has a quarter note in 5/8 time, then a quarter note in 2/4 time, followed by a quarter note in 3/4 time. Dynamics are *mp*. A triplet of eighth notes is marked in the Vln. part.

96

Vln. *mp*

Vla. *mf*

Vc. *mp*

3

7/8 2/4 3/4

Detailed description: This system covers measures 96 to 99. The Violin part has a quarter note in 7/8 time, then a quarter note in 2/4 time, followed by a quarter note in 3/4 time. Dynamics are *mp*. The Viola part has a quarter note in 7/8 time, then a quarter note in 2/4 time, followed by a quarter note in 3/4 time. Dynamics are *mf*. The Violoncello part has a quarter note in 7/8 time, then a quarter note in 2/4 time, followed by a quarter note in 3/4 time. Dynamics are *mp*. Triplet markings are present in the Vln. and Vla. parts.

100

Vln. *mp* *mf* *mp*

Vla. *mp* *mf*

Vc. *f* *mp* *mp*

3

3/4 5/8 2/4 3/4

Detailed description: This system covers measures 100 to 103. The Violin part has a quarter note in 3/4 time, then a quarter note in 5/8 time, followed by a quarter note in 2/4 time. Dynamics are *mp*, *mf*, and *mp*. The Viola part has a quarter note in 3/4 time, then a quarter note in 5/8 time, followed by a quarter note in 2/4 time. Dynamics are *mp* and *mf*. The Violoncello part has a quarter note in 3/4 time, then a quarter note in 5/8 time, followed by a quarter note in 2/4 time. Dynamics are *f*, *mp*, and *mp*. Triplet markings are present in the Vln. and Vla. parts.

105

Vln. *mp*

Vla. *mp*

Vc.

110

Vln. *f* *mp*

Vla. *f* *mp*

Vc. *f* *mp* *pp*

115

Vln. *pp*

Vla. *pp*

Vc.

120

Vln. *mp* *p*

Vla. *mp* *p*

Vc. *mp* *p*

125 8va-----

Vln. *ff*

Vla. *ff*

Vc. *ff*

131 (8)

Vln. *mf* *mp* *mf* *p*

Vla. *mf* *mp* *mf* *p* *not sentimental*

Vc. *mf* *mp* *mf* *p*

138 *not sentimental*

Vln. *p*

Vla. *p* *gliss.* *not sentimental*

Vc. *pp*

144

Vln. *mp* *p*

Vla. *mp* *p*

Vc. *mp* *p* *sentimental* *not sentimental*

150

-----> sentimental -----> not sentimental

Vln. *mf*

Vla. *mf*

Vc. *mf*

157

Vln. *mp*

Vla. *mp*

Vc. *mp*

163

-----> sentimental

Vln. *mf*

Vla. *mf*

Vc. *mf*

169

-----> not sentimental

-----> sentimental -----> not sentimental

Vln. *mp* < *mf*

Vla. *mp* < *mf*

Vc. *mp* < *mf*

175

Vln. *p*

Vla. *p* gliss.

Vc. *p*

184 joyful

Vln. gliss. 2 *p* joyful 2 3

Vla. 2 *p* 2

Vc. 2 *p* 2

193

Vln. 2 3 2 3

Vla. 2 2

Vc. 2 2

202

Vln. 3 *mp*

Vla. *mp*

Vc. *mp*

208

Vln. *mf*

Vla. *mf*

Vc. *mf*

This system contains measures 208 to 212. The Violin part features a melodic line with eighth notes and triplet eighth notes. The Viola part provides harmonic support with eighth notes and quarter notes. The Violoncello part has a bass line with eighth notes and quarter notes. The dynamic marking *mf* is present for all parts.

213

Vln. *p*

Vla. *p*

Vc. *p*

This system contains measures 213 to 217. The Violin part continues with triplet eighth notes. The Viola part has a more active eighth-note accompaniment. The Violoncello part features a melodic line with eighth notes. The dynamic marking *p* is present for all parts.

218

Vln.

Vla.

Vc.

This system contains measures 218 to 222. The Violin part has triplet eighth notes. The Viola part has a melodic line with eighth notes. The Violoncello part has a melodic line with eighth notes. There is no dynamic marking for this system.

223

Vln. *mf*

Vla. *mf*

Vc. *mf*

This system contains measures 223 to 227. The Violin part has triplet eighth notes. The Viola part has a melodic line with eighth notes. The Violoncello part has a melodic line with eighth notes. The dynamic marking *mf* is present for all parts. The system concludes with a 3/4 time signature change.

228

Vln.

Vla.

Vc.

232

Vln.

Vla.

Vc.

ff

ff

ff

poco rit.

237

Vln.

Vla.

Vc.

mf

mf

mf